



PD750

SOFTWARE INSTALLATION GUIDE



PD750

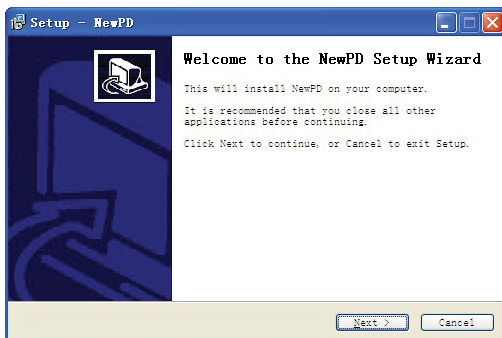
SOFTWARE INSTALLATION GUIDE



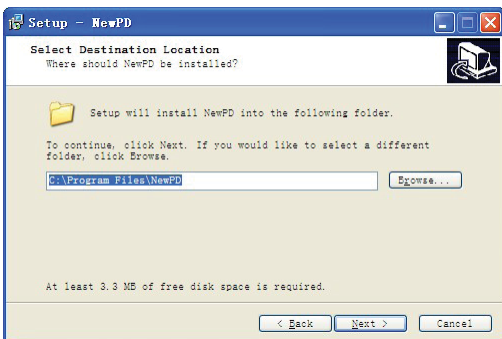
1. Insert the Install CD provided in the box. Open the CD and you will see this icon.



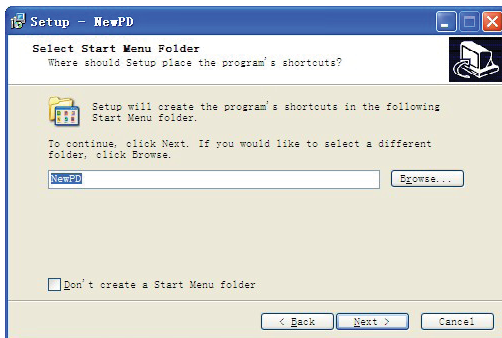
2. Double click the icon and follow the on screen instructions



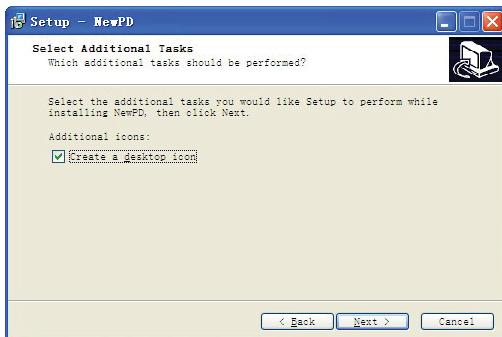
3. Click next to continue and choose a new folder if required.



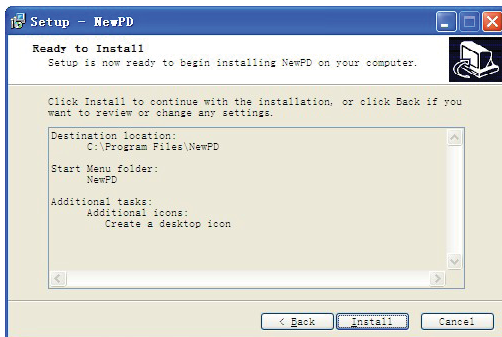
4. Click next to continue and rename if required.



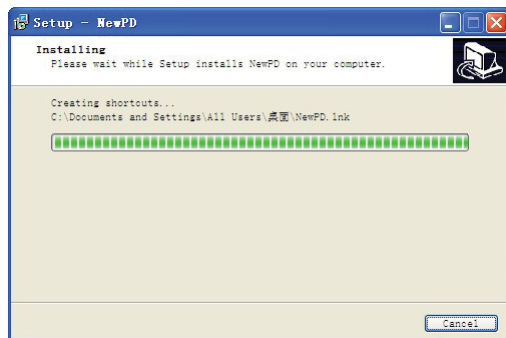
5. Click next to continue and select 'create a desktop icon'



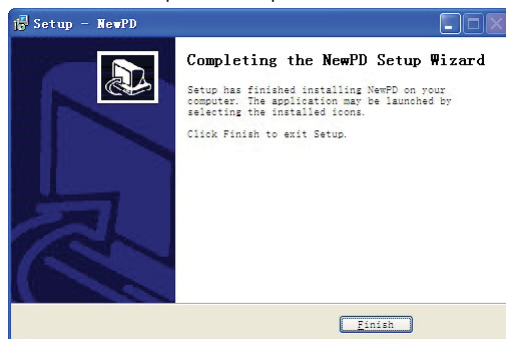
6. Click next to continue and ensure the information is correct.



7. Please wait while the software installs.



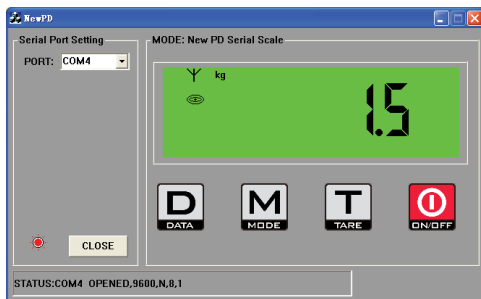
8. Click finish to complete the setup.



9. Ensure the scale is in weighing mode and the cable is connected to the scale and the computer.
Double click the 'New PD' icon.



10. The scale will find the right port automatically. Installation is complete.



PD750 USB INSTALLATION INSTRUCTION

1. Use the USB cable to connect scale to your computer.
2. Start installation by double Clicking 'NewPD-setup.exe' in the CD.
3. After installation, you will see 'Found new hardware'.
4. Click the PD750 icon on your desktop to start the software.

TROUBLE SHOOTING

1. Why does the software not find the port automatically?

Answer: Check the scale and make sure it's in the weighing mode. Reboot the software, the scale will find the right port automatically

2. Why does nothing happen on the computer software when I put things on the platform?

Answer: Repeat these steps as follows:

- 1) Start the scale and make sure it's in the weighing mode.
- 2) Install the software its the first time using it. If you have previously installed the software before please ignore this step.
- 3) Connect the USB cable to your computer and scale.
- 4) Double click the icon named 'NewPD' on the desktop to open the software.